



SHENYANG ZISHENLONG LIGHT STEEL COLOR PLATE CO., LTD.

沈阳紫神龙轻钢彩板有限公司

Certifications & Qualifications

www.zslsteelstructure.com



ZI SHEN LONG

Table of Contents

A. Company General Information

B. Related Websites

C. Business License and Certificates

D. Company and Factory Information

E. Product Specific Information

F. Facilities Information

G. Customer Visit

H. Design Capabilities

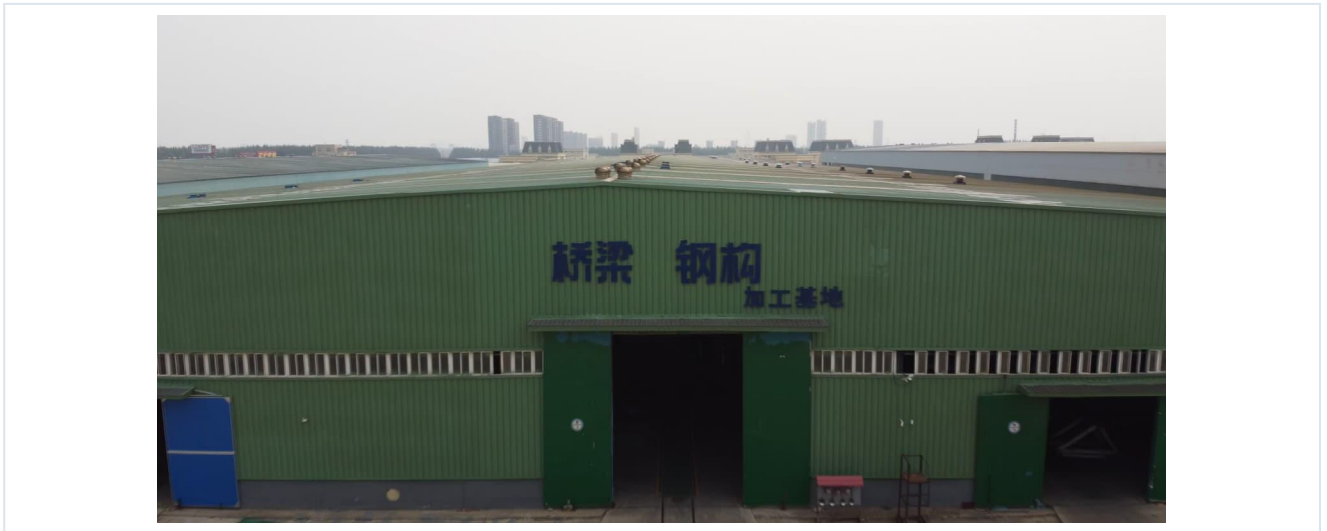
I. Project Experience

A. Company General Information

Registered Chinese Name	沈阳紫神龙轻钢彩板有限公司
Company English Name	Shenyang Zishenlong Light Steel Color Plate Co., Ltd.
Operating Address	Yuhong Township, Dingxiang Village, Shenyang, Liaoning Province, China
Main Products / Services	Steel structure building (Design, Production, Installation guide)
Facility Surface	12,000 square meters
Production Line	7
Total Employees	70
Staff in QC Dept	21
Staff in R&D Dept	5
Year Started Export	2018
Main Markets	North and South America, Europe, Australia, South Africa
Main Clients (Name/Country)	Diego / Chile
Exhibiting Experience	3 years
Annual Production Capacity	30,000 ton
Last Year Annual Output	25,000 ton
Company Audit Available	Yes

A. Company Overview — Factory

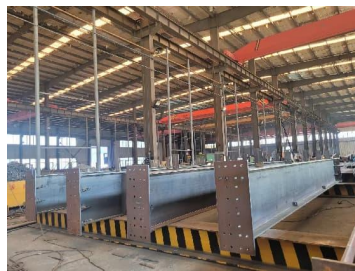
Steel structure fabrication base & workshop



Fabrication Base



Workshop



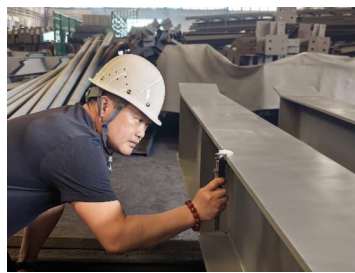
Workshop



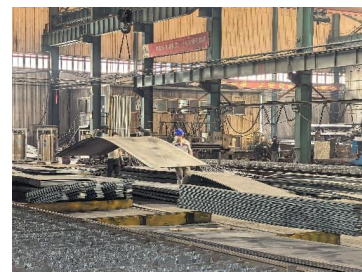
Cutting Workshop



Assembly



QC Inspection



Material Yard

B. Related Websites

OFFICIAL WEBSITE

www.zslsteelstructure.com

ALIBABA SHOP 1

<https://syzsl51888.en.alibaba.com/>

ALIBABA SHOP 2

<https://syzsl91888.en.alibaba.com/>

ALIBABA SHOP 3

<https://syzsl61888.en.alibaba.com/>

TIKTOK

<https://www.tiktok.com/@zishenlong.steel>

FACEBOOK

<https://www.facebook.com/profile.php?id=61570300743530>

LINKEDIN

<https://www.linkedin.com/company/zishenlong/>

D. Company and Factory Information

Steel Structure Factory

Factory Type	Steel Structure factory
Address	No. 27, Zhenxing 5th Street, Fanrong 3rd Road, Xinmin City, Shenyang, Liaoning Province, China
Postal Code	110326

Panel Factory

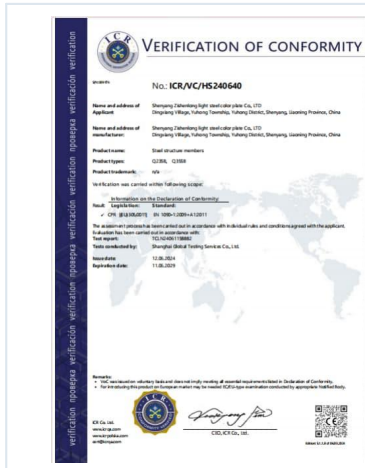
Factory Type	Panel factory
Address	Guangye West Road, Yuhong District, Shenyang, Liaoning Province, China
Postal Code	110150

Office

Name	Office - Zishenlong Color Steel
Address	Room 507, A/C Building, JinGu Building, BeiYi West Road, Tiexi District, Shenyang, Liaoning Province, China
Postal Code	110026

C. Business License and Certificates

Product & System Certificates



CE Certification
 Verification of Conformity — steel structure members (EN 1090-1).



CE Certification
 Verification of Conformity — steel structures.



CE Certification
 Verification of Conformity — steel structure components.



Utility Model Patent
 Steel structure weld seam processing device.



Utility Model Patent
 Patent certificate (utility model).



ISO 9001
 ISO 9001 quality management system certificate.

E. Product Specific Information

Product Name	Steel Structure building
Dedicated Area Surface	12,000 square meters
Year Started Production	2011
Year Started Export	2018
Main Markets	North and South America, Europe, Canada, Australia, South Africa
Annual Production Capacity	30,000 ton
Last Year Annual Output	25,000 ton

H. Design Capabilities

Capabilities

- Detailed drawing design capability
- Construction drawing design capability
- 3D rendering design capability

Software

- Detailed drawing design: TEKLA
- Construction drawing design: PKPM

Company development timeline



F. Facilities Information

Main production equipment



Laser Cutting Machine



CNC Plasma Cutting Machine



CNC Flame Cutting Machine



H-Beam Production Line



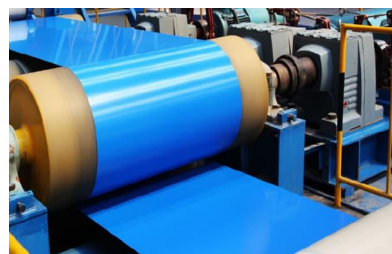
Submerged Arc Welding Machine



Shot Blasting Machine



Hydraulic Straightening Machine



Color Coating Line



CZ Purlin Roll Forming Machine

Coil processing & panel line



Uncoiler



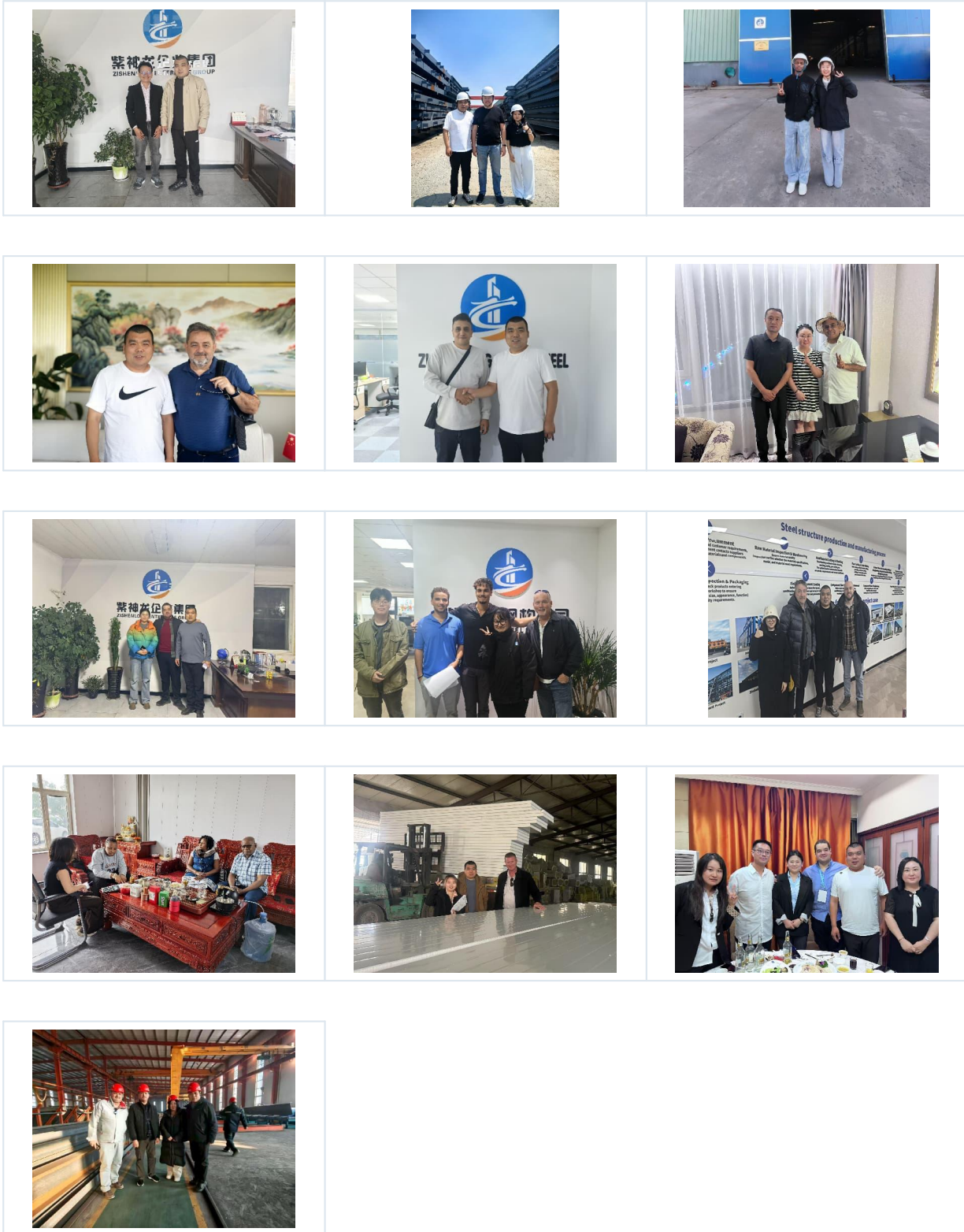
Leveler



Slitting Machine

G. Customer Visit

We warmly welcome customers to visit our factories and offices. On-site company audits are available upon request.



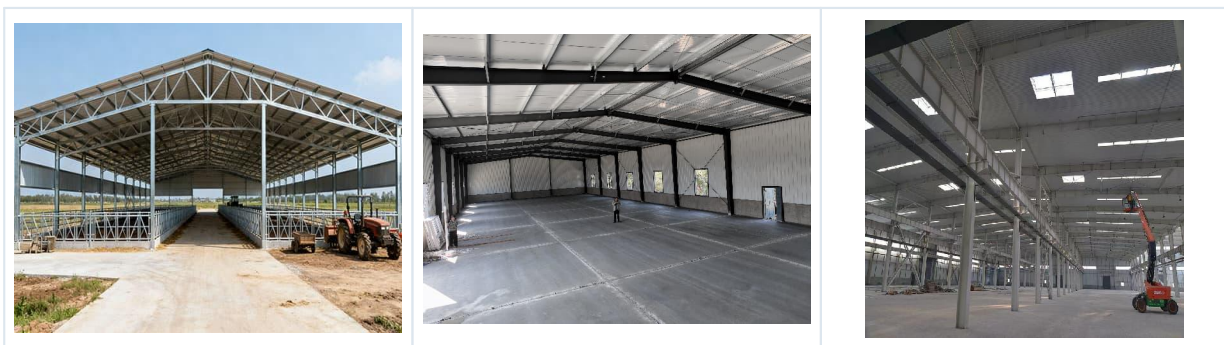
I. Project Experience

Completed project cases



Steel Structure Garage — Canada **Steel Structure Warehouse — Chile**

Steel Structure Project — Kenya



Steel Farm Barn — Haiti

Steel Building Project — Liberia

Steel Structure Workshop — El Salvador



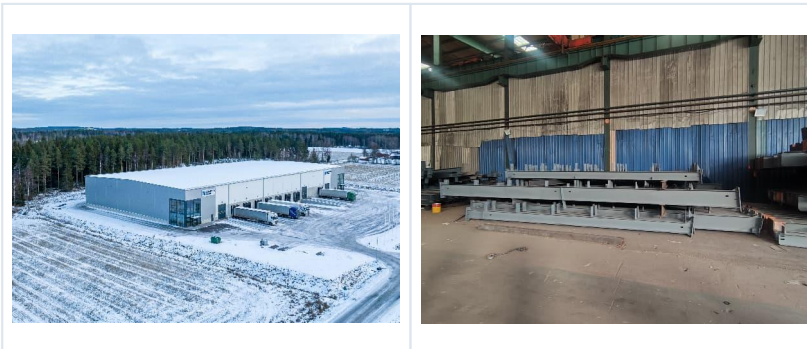
Steel Structure Warehouse — USA

Steel Structure Shed — Australia

Steel Structure Factory — Ethiopia

I. Project Experience

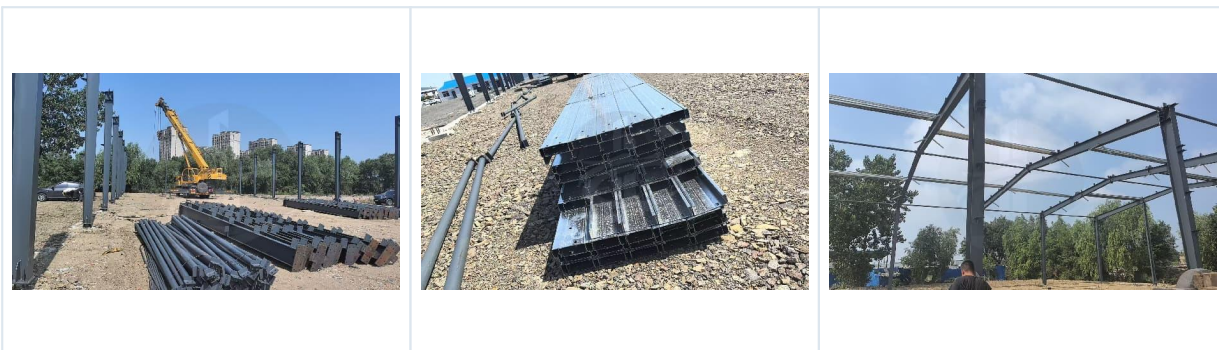
Completed project cases



Steel Structure Warehouse — Sweden

Steel Components — Workshop

Construction & installation process

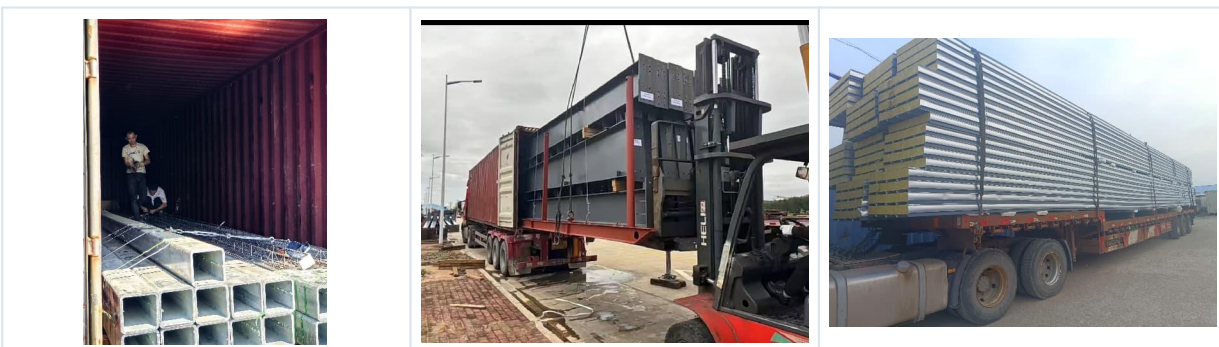


Column Erection

Beam Installation

Purlin Installation

Loading & shipping



Container Loading

Container Loading

Container Loading

- Project cases delivered across multiple overseas markets — Canada, Chile, Kenya, Haiti, Liberia, El Salvador, USA, Australia, Ethiopia, Sweden and more.
- Shipping experience with documented bills of lading.
- Positive customer feedback from completed projects.